

EAT•N

Powerware

Powerware® Static Auto Tie Architecture

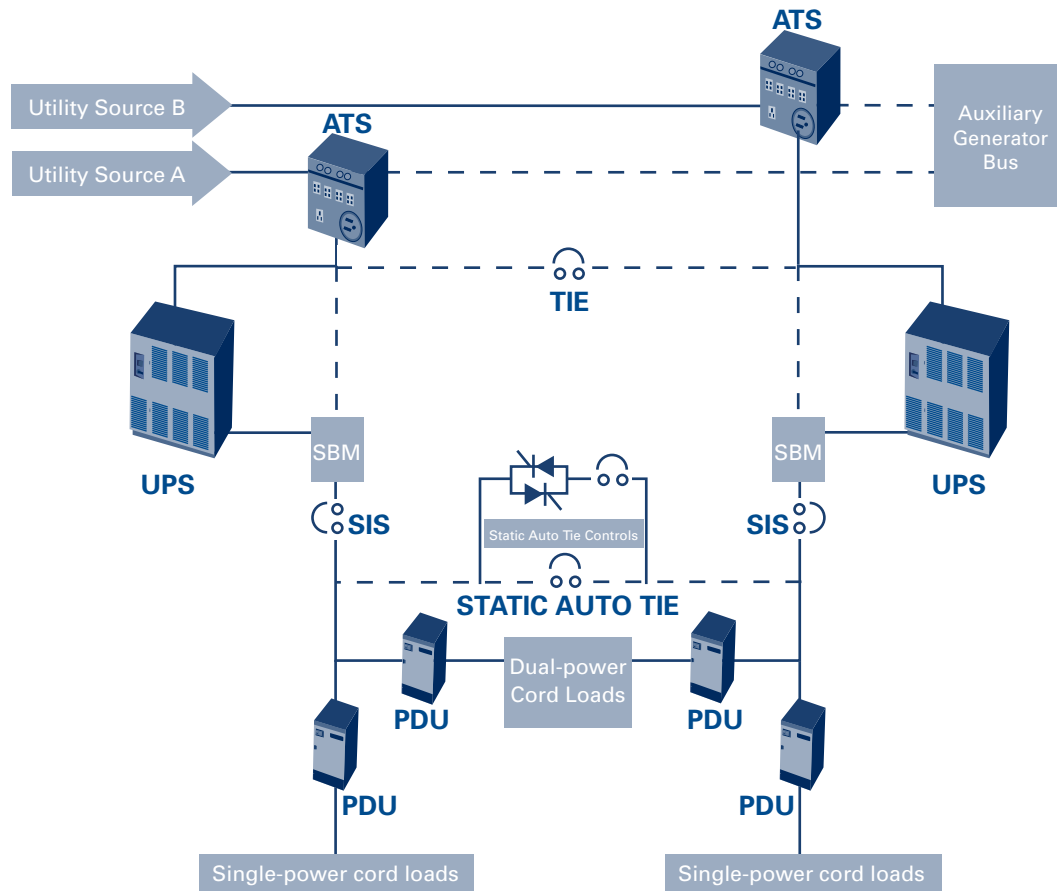
**Let Eaton® show you how to save over
\$1 million the first year...**



- Reduce expenses
- Increase efficiency
- Reduce heat
- Decrease maintenance requirements
- Simplify complexity
- Improve reliability

**...on the construction of
your next data center.**

Fully-deployed Powerware Static Auto Tie configuration



Powerware Static Auto Tie configuration

In the Static Auto Tie configuration displayed in the diagram above, there is a Hot-Tie® static switch circuit between the outputs of the two UPS modules that automatically transfers the loads from one to the other as necessary. This less complex, dual-path architecture streamlines the distribution system to eliminate series switching and reduce the potential downtime of single-power cord loads by up to 50 percent. As a result, the Static Auto Tie architecture offers a number of benefits:

- Reduced capital expenses
- Reduced installation costs
- Increased system reliability
- Increased system efficiency
- Decreased maintenance requirements
- Reduced raised-floor space requirements

Overview of savings example

Reduced capital expense	\$ 700,000
Reduced installation cost	\$ 200,000
Lower operating energy costs	\$ 10,091
Lower yearly maintenance costs	\$ 60,000
Increased valuable operating floor space	\$ 39,600
Total Savings	\$ 1 Million+

All dollar figures are based on a 50,000 ft² raised-floor facility supported by a dual-path configured 3000 kVA UPS. Estimated cost of downtime was \$750,000 per hour with a four-hour minimum per instance.

Twelve static transfer switches were removed from the initial design by using Static Auto Tie.

Dollar values will vary based on site design.

UNITED STATES
8609 Six Forks Road
Raleigh, NC 27615 U.S.A.
Toll Free: 1.800.356.5794
or 919.872.3020

www.powerware.com

CANADA
Ontario: 416.798.0112
Toll free: 1.800.461.9166

LATIN AMERICA
Argentina: 54.11.4343.6323
Brazil: 55.11.3616.8500
México: 52.55.5488.5252

EUROPE/MIDDLE EAST/AFRICA
Denmark: 45.3686.7910
Finland: 358.94.52.661
France: 33.1.6012.7400
Germany: 49.0.7841.604.0
Italy: 39.02.66.04.05.40
Norway: 47.23.03.65.50
Sweden: 46.8.598.940.00
United Kingdom: 44.1753.608.700

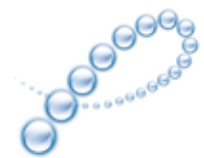
ASIA PACIFIC
Australia/NZ: 61.2.9693.9366
China: 86.21.6361.5599
HK/Korea/Taiwan: 852.2745.6682
India: 91.11.2649.9414 to 18
Singapore/SEA: 65.6829.8888

Eaton, Powerware, Hot-Tie, and PowerChain are trade names, trademarks, and/or service marks of Eaton Corporation and its subsidiaries or affiliates.

© 2007 Eaton Corporation
All Rights Reserved
Printed in USA
PLS61FXA
September 2007



Powerware



**PowerChain™
Management
Solutions**