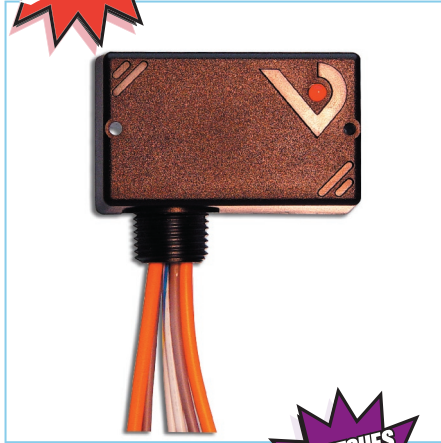


Hawkeye® 120 Series

SPST Status Relay



**SWITCHES
1 HP @
120VAC**

The H120 Zone Ventilation Device provides control and status for all fractional horsepower motors commonly used in Zone specific mechanical system control. The installation of the relay and current switch are automatically made by connecting the relay contacts...saves the labor of mounting a traditional separate current switch.

APPLICATIONS

- Unit Ventilators
- Fan Coil Units
- Exhaust Fans
- Fan Terminal Units
- Fractional HP Motors
- Light Resistive Loads

Sleek field enclosed relay and current switch saves installation time and space

- The current switch and relay are in series...connect the contacts to the load and your current switch is automatically installed
- The nipple mount housing can be connected to any 1/2" conduit knockout for installation versatility
- Relay coil LED streamlines job commissioning and check out
- HP ratings make the H120 ideal for control and status of fractional HP motors

Super-low turn on for the smallest of loads

- 0.1A turn on easily monitors the smallest motors

SPECIFICATIONS

Operating Temperature	-15°C to 60°C (13.8A max.) -15°C to 50°C (20A max.)
Operating Humidity	0-95% non-condensing
Expected Relay Life (mechanical)	10 million cycles
Relay Status	LED ON=energized
<i>Current Switch:</i>	
Current Switch Contact	N.O., 100mA@30VAC/DC (H120); N.C., 100mA@30VAC/DC (H120NC)
Minimum Turn On Current	0.1AAC
Dimensions... (LxWxH)	2.92" x 1.80" x 1.58"; (H) 1/2" NPT nipple

RELAY CONTACT RATINGS (N.O.)

Resistive.....	20A(r)*@277VAC/28VDC (250,000 Cycles)
Motor.....	120VAC, 1HP 208VAC, 1HP 250VAC, 2HP 277VAC, 2HP
Ballast.....	277VAC, 20A
Tungsten.....	120VAC, 10A

*See operating temperature specification

TYPICAL COIL PERFORMANCE

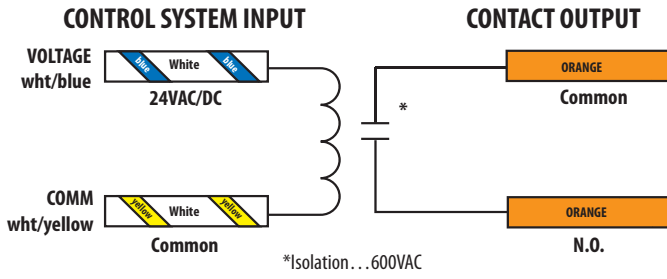
Voltage	Coil Current	
	AC	DC
24V.....	75mA	32mA

ORDERING INFORMATION

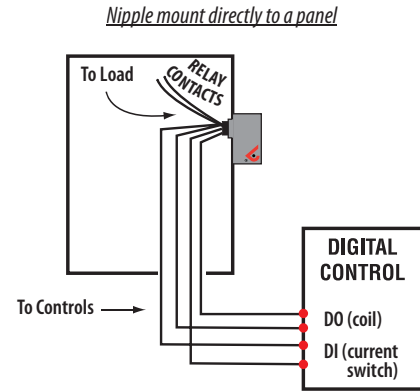
MODEL	COIL	RELAY CONTACT	CURRENT SWITCH CONTACT
H120	24VAC/DC	SPST, N.O.	N.O. 100mA@30VAC/DC
H120NC	24VAC/DC	SPST, N.O.	N.C. 100mA@30VAC/DC



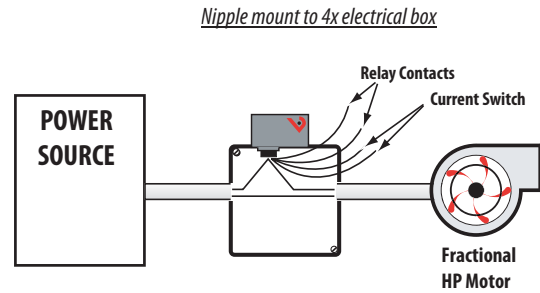
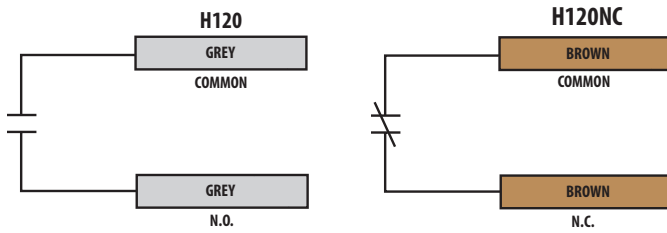
WIRE COLOR CODES



APPLICATIONS/WIRING EXAMPLE



CURRENT SWITCH WIRE COLOR CODES



DIMENSIONAL DRAWING

