

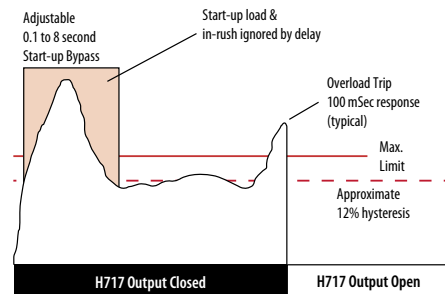
Hawkeye® Motor Protection & Load Switching Current Switches 715/717



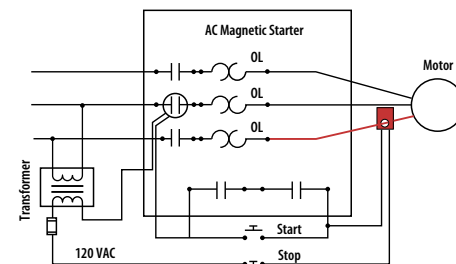
SPECIFICATIONS

Amperage Range	2-135A
Sensor Power	Induced
Output	Digital Triac (see ordering table)
Insulation Class	600VAC rms
Frequency Range	50/60Hz.
Temperature Range	-15° to 60°C
Humidity Range	0 - 95% non-condensing
Setpoint	Adjustable to ±1% of range
Hysteresis	10% Typical
Dimensions... (LxWxH)	3.13" x 2.15" x 1.00"
Sensor Hole Size	0.75" diameter

APPLICATIONS/WIRING DIAGRAM



- The 717 provides faster response than motor thermal fuses and circuit breakers. Used in this application, motor life may be extended. (Designed as a locked rotor sensor, the 717 is not intended as a replacement for other motor protection which may detect lower load increase over a long period of time—such as fuses.)



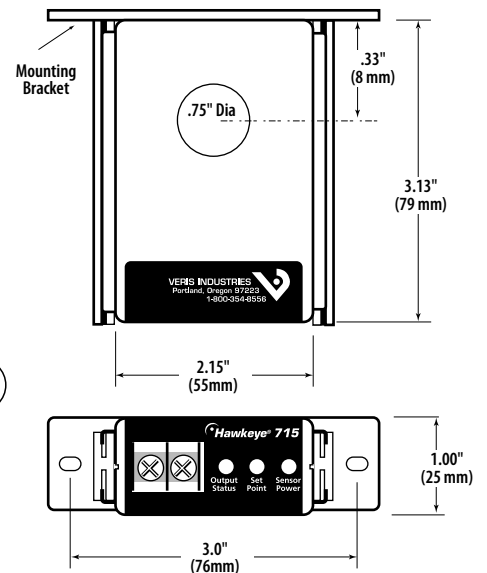
Protect motors from overload conditions... switches most contactors directly

- Sensor trips when threshold is exceeded... extending motor and tool life
- Stage or shunt chillers, pumps, & fans
- Faster response than thermal fuses
- Ideal for grinders, conveyors, machine tools... extending tool life

H717 for locked rotor protection... H715 for belt loss protection

- Adjustable setpoint...2 to 135A
- Combines CT (current transformer), and output in a single unit
- Self-induced power—fast installation
- 100% solid-state, no moving parts to fail
- Model 717 features adjustable 0.1 to 8 second start-up bypass

DIMENSIONAL DRAWINGS



ORDERING INFORMATION

MODEL	AMPERAGE RANGE	OUTPUT TYPE	OUTPUT RATING	LED INDICATOR	IN-RUSH DELAY	SETPOINT ADJUSTMENT
H715	2-135A	N. O., Triac	0.05 to 2A @ 75-120VAC continuous 8A @ 75-120VAC for 2 sec. (surge)	Status & Power		●
H717	2-135A	N. C., Triac	0.05 to 2A @ 75-120VAC continuous 8A @ 75-120VAC for 2 sec. (surge)	Status	●	●